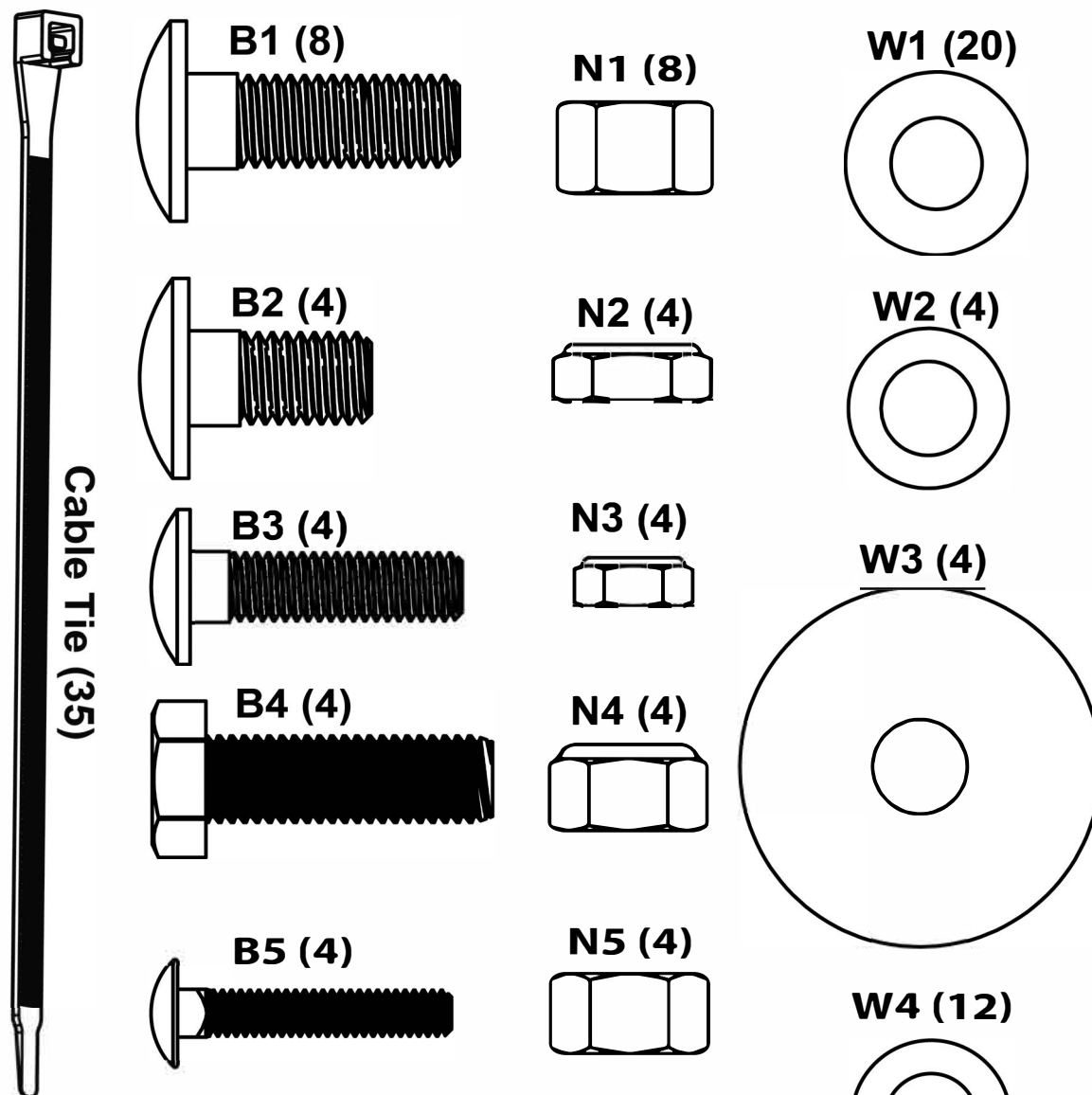


TOPPER LIFT

Installation Manual

- You may also watch the installation video at www.TopperEZLift.com
- For installation support please call 651-207-5634 9AM-5PM CST M-F
- Please read [Installation Manual](#), [User Manual](#) and [Tips and Tricks](#)
- For Tacoma and some mid-size pickups refer to the Tacoma Install Manual on our website



Cable Tie (35)

Required Tools

- Level
- Marker/Pencil
- 3/4" or 19mm Wrench
- 9/16" Wrench
- Ratchet
- 3/4" Socket
- 9/16" Socket
- 7/16" Socket
- 5/16" Nut Driver Bit
- Drill, 1/2" Bit, 1/4" Bit
- Wire Cutter / Snips

Recommended Tools

- Angle Drill
- Stepper Drill Bit (up to 1/2")
- Ratcheting Wrenches

Self-Tapper (8)



Cable Tie Holder (10)

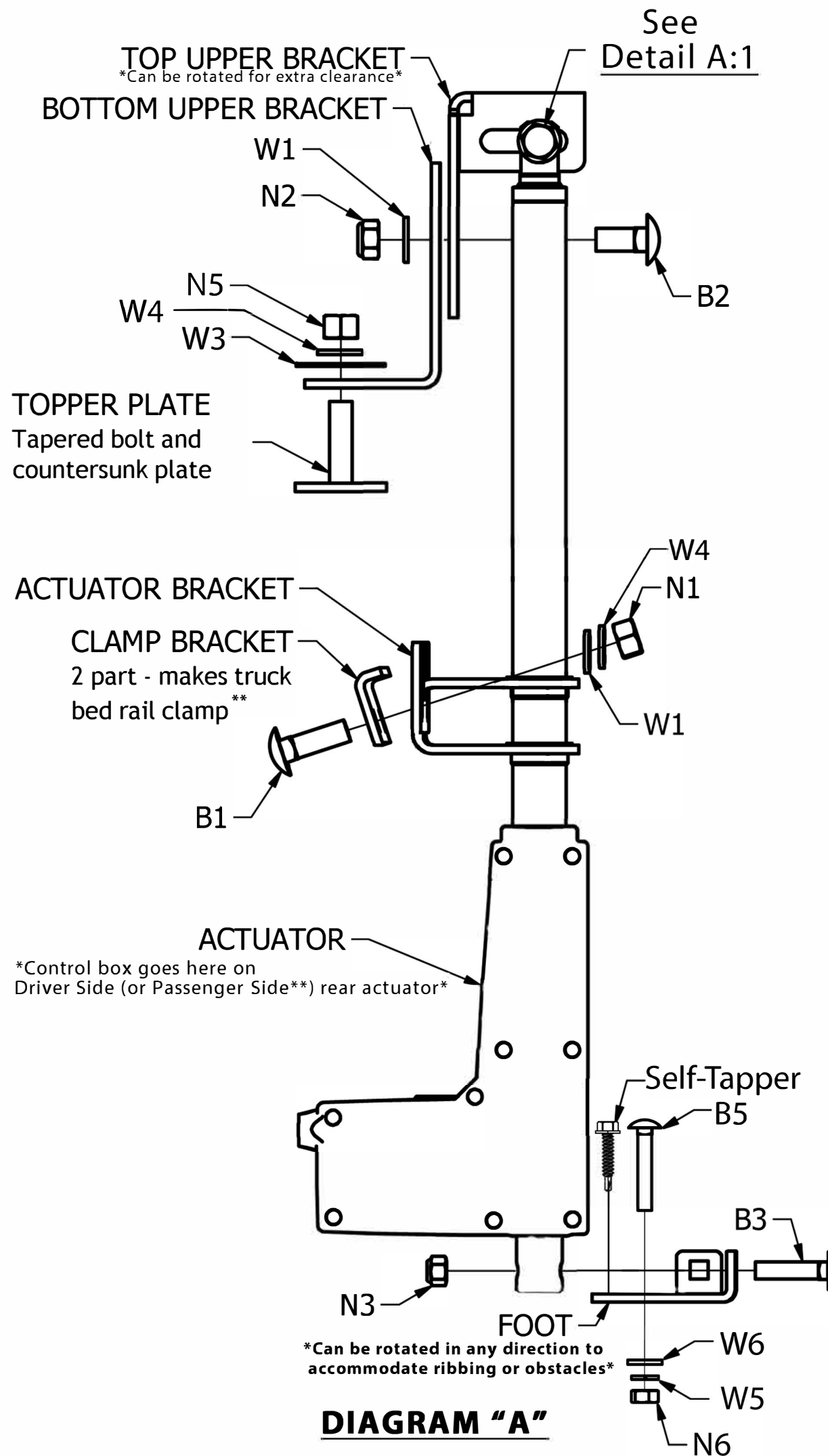
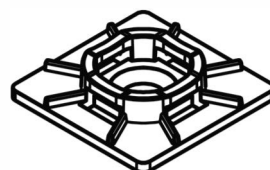
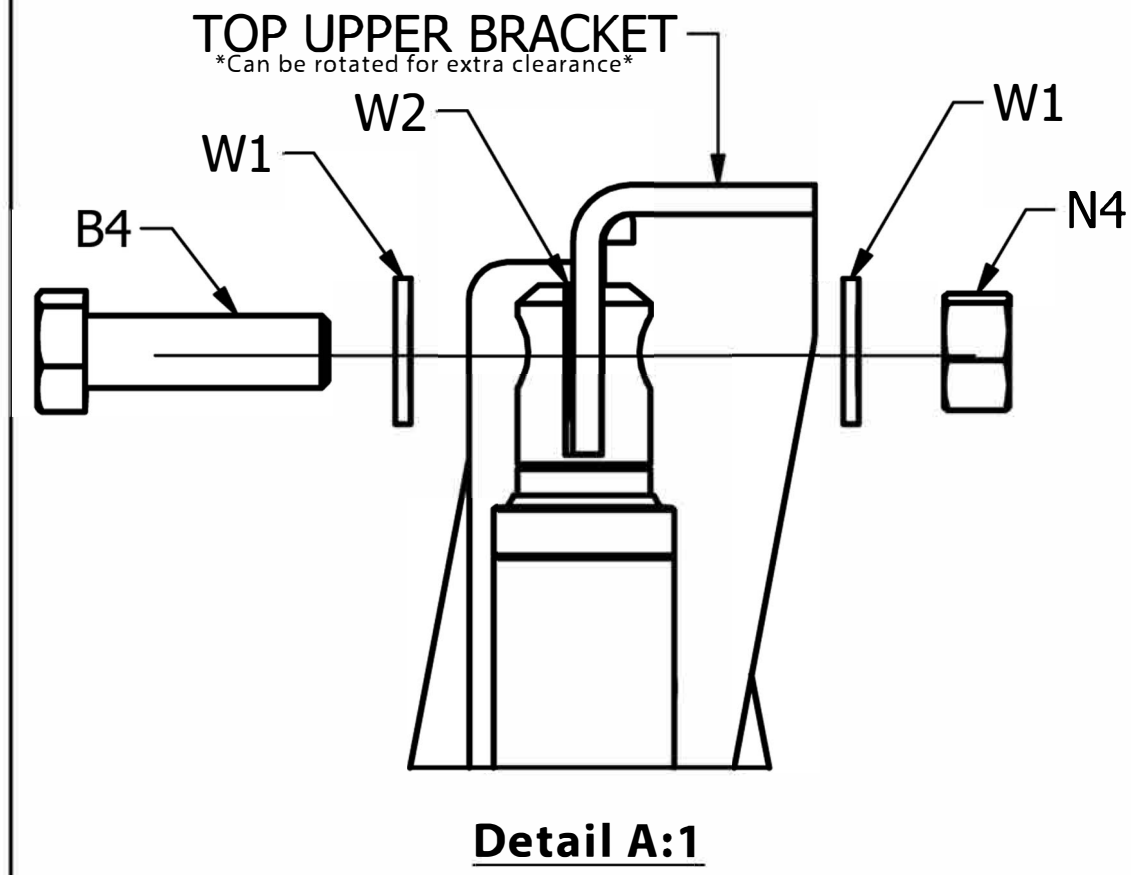


DIAGRAM "A"

****On some Mid-Sized Trucks (Tacoma) the Power Wire, Jump Wire, and Control Box can be placed on the passenger side and Actuators placed on opposite sides for a cleaner install. Spacer may also be needed to mount to bed rail system (Clamp Brackets will not be needed). Refer to the Tacoma Install Manual and Video on our website at www.TopperEZLift.com****



Detail A:1

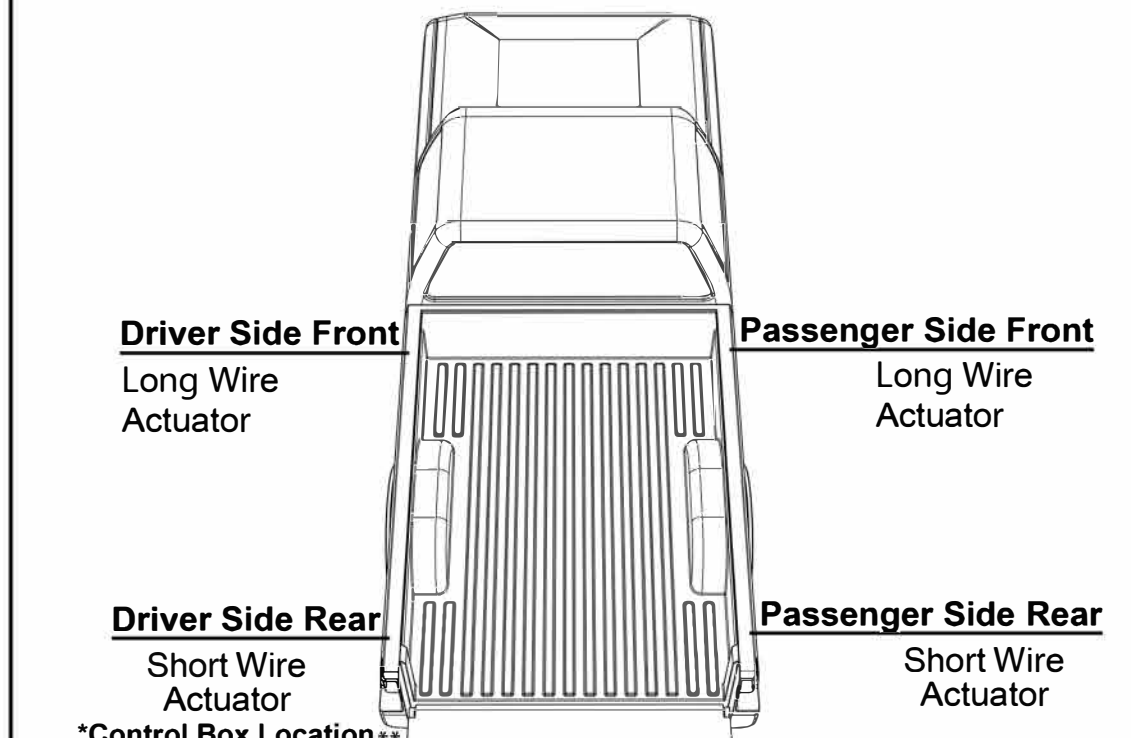


DIAGRAM "B"

RED POWER, BLUE JUMP WIRE AND ACTUATOR WIRES CONNECT HERE

Red is Power

Actuators with Short length wires are for rear (tailgate) and Long length wires are for front (cab).

The Green and Blue color wire is the Jump Wire, it connects Driver Side Actuators to the Passenger Side Actuators.**

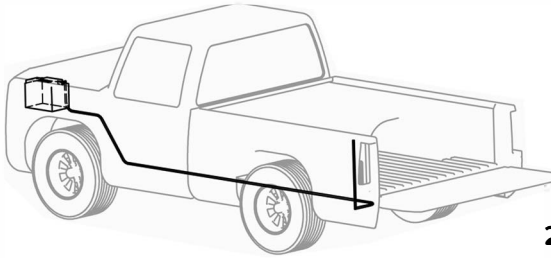
INSTALL PREPERATION

- Truck **MUST BE ON LEVEL GROUND**
- Remove existing brackets that hold the topper to the truck.
- Make sure the truck bed is clean and free of debris.
- Ensure topper is perfectly aligned. Check that tailgate closes and rails on truck and topper are lined up.
- Disconnect third brake light and any accessory light wires going to topper.
- Remove fuse from Power wire.

1

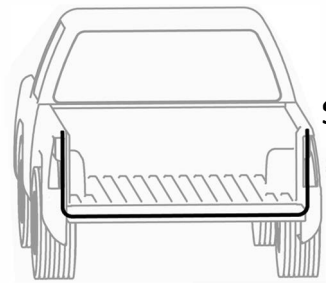
ELECTRICAL PREPERATION

- Connect "+" and "-" on power wire to the vehicles battery respectively.
- Run Power wire to rear Driver Side. Secure using cable ties.
- *Avoid Hot and Moving parts***
- Run Power wire through a hole near taillight on Driver Side.
- Pin Extractor tool can be used to avoid drilling extra holes. ("B"=Black or Brown wire)



2

- To run jump wire, start at the passenger side rear near taillight.
- Feed Blue labled end into a hole near the taillight. Run wire under box of pick-up.
- Continue feeding the cable to driver side rear.
- If possible use same hole as power wire.
- Pin Extractor tool can be used to avoid drilling extra holes. ("B"=Black or Brown wire)

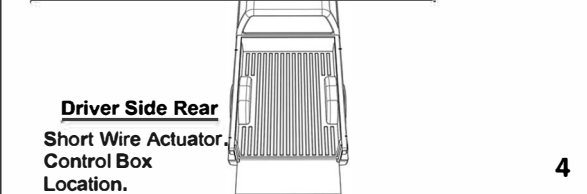


Start Here

3

ACTUATOR INSTALLATION

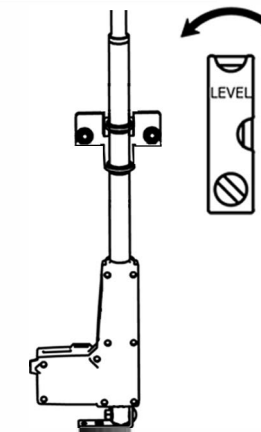
- Assemble the Actuators with brackets and hardware.
- *Refer to "Diagram A"*, Do not add Upper Bracket assembly to Actuator yet.**
- Start with the Driver Side rear. (Short wire Actuator).
- Place the Actuators close to the corners to spread the load of the topper. Avoid window hardware, refer to step 8.
- *Refer to "Diagram B" for placement of Actuators and orientation of Driver Side rear Actuator***



4

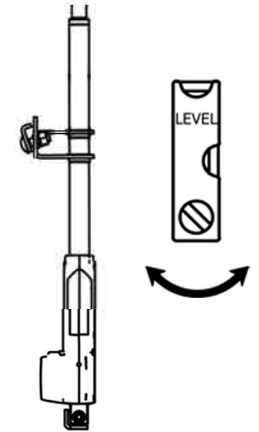
- Slide the "Clamp Bracket" up to the bedrail. Secure one bolt lightly
- Level Actuator front to back (Cab to Tailgate).
- Once level, tightly secure both bolts on "Clamp Bracket".

****Actuator Brackets" flip to accommodate Different Truck situations***



5

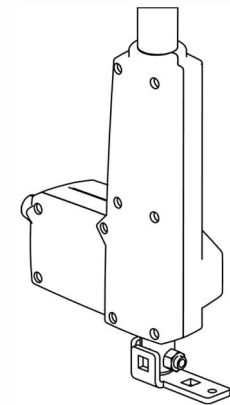
- Thoroughly clean area of bed where adhesive pad will go.
- Level Actuator side to side (Driver Side to Passenger Side) by moving the base of Actuator.
- Once level is found, make a mark next to "Foot" on truck bed.
- **"Foot" rotates to accommodate ribbing***



6

- Slide Actuator up and peel backing off of adhesive on the bottom of "Foot". Carefully slide Actuator back down and line up "Foot" with mark made in the previous step.

- Place Self-tapping screw in one of the holes on the "Foot". Use 1/4" Drill bit to make a hole in bed at other hole in foot. Secure using hardware. Refere to DIAGRAM "A"



***NOTE: Use self-tappers first to ensure bolt will be accessible under truck before drilling hole for 1/4" Carriage Bolt.**

****"FOOT" Rotates***

7

- Measure the distances between the Actuators to maintain a close to equal distance. Place the actuators close to the corners to spread the load of the topper.

- Take care to avoid topper and truck hardware. Ensure brackets will NOT touch when lift is operated. Leave at minimum 1/2" of clearance from topper hardware and windows.

NOTE: Actuators being level is of more importance then the distance between them.

-Repeat steps 5, 6 and 7 for remaining 3 Actuators

8

UPPER BRACKETS & TOPPER PLATE INSTALLATION

- Make sure topper is aligned.
- Align "Upper Brackets" and loosley tighten. Allow room for adjustment.

- Mark the position of the oval hole on the bottom of "Bottom Upper Bracket". A hole will be drilled in center of mark in the next step.

Mark Here

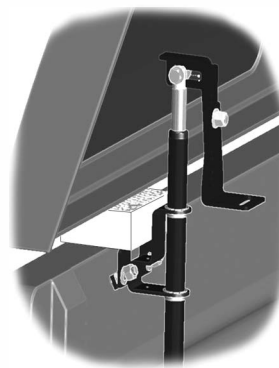


-Repeat for remaining 3 Actuators

9

- Spin "Upper Brackets" towards the inside of truck bed.
- Lift up topper (have a friend help) Place provided foam between the topper and truck where hole will be drilled. ***Don't drill into truck!**
- Use drill and 1/2" drill bit. Drill holes in center of mark made in the last step.

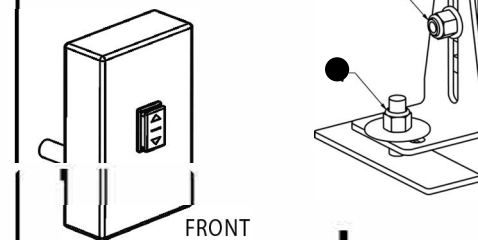
- Remove old topper tape and foam blocks, then insert "Topper Plates" into holes from under side of topper.



10

- Slide "Bottom Upper Bracket" over "Topper Plate" bolt. The topper rail will sandwich between plates. Loosely tighten all "Upper Brackets", allow for movement.
- Replace Fuse and connect all remaining connectors.
- **Lower all Actuators to the down position using the Control Box.** (zero them out.)**

- **Lower all Actuators to the down position using the Control Box.** (zero them out.)

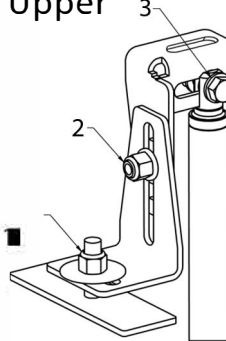


-Realign the Topper*

11

- Ensure Actuators are fully lowered.
- Align brackets and firmly tighten the "Topper Plate" to the "Bottom Upper Bracket" (1),
- Tighten the "Bottom Upper Bracket" to the "Top Upper Bracket" (2).
- Finally tighten the "Top Upper Bracket" to the top of the "Actuator" (3).

- Refer to "Diagram A" to ensure the proper hardware is being used.



-Repeat steps 10, 11 and 12 for remaining 3 Actuators

- Double check all of the nuts and bolts to ensure all are tight.

- You can now operate your TopperEZLift. You may notice that the actuators get off by a bit, this is normal, they will realign when they are all the way up or down.

- Apply the provided topper tape on the under side of your topper rail. This ensures a good seal and prevents damage to the truck. It is OK to apply multiple layers of tape and is some times needed to get the most dust free seal.
- Lower Topper applying topper tape and allow some time for adhesive to make a good contact.

13

WIRE CLEAN UP

- Proper clean up of wiring will ensure there will be no snagging or pinching of wires.

- Use the Cable Ties and follow "Diagram C" to the right to secure the wires on all Actuators.

- Wipe down and clean underside of truck bed rail for Cable Tie Holders.

- Use 5 Cable Tie Holders and Cable Ties on Driver Side and 5 more on Passenger Side of truck.

14

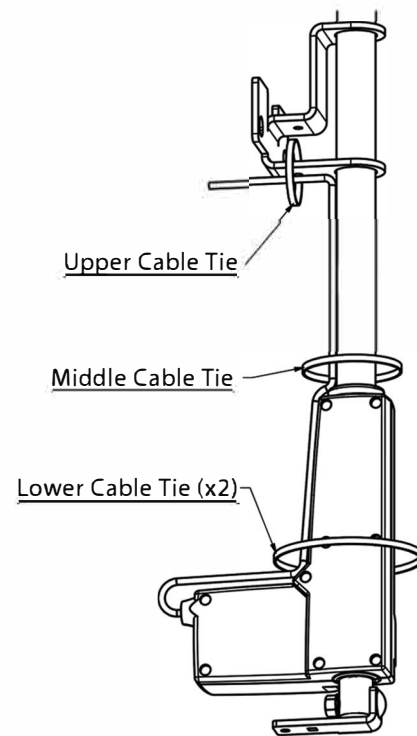
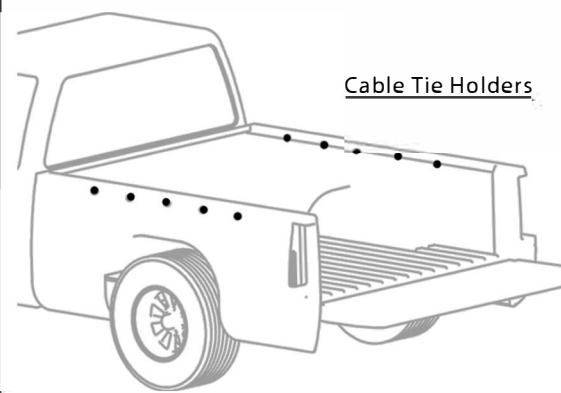


Diagram "C"

15

- Evenly space out the Cable Tie Holders between the front and rear actuators and secure in place on underside of topper rail.

Pull Cable tightt before tightening Cable Ties.



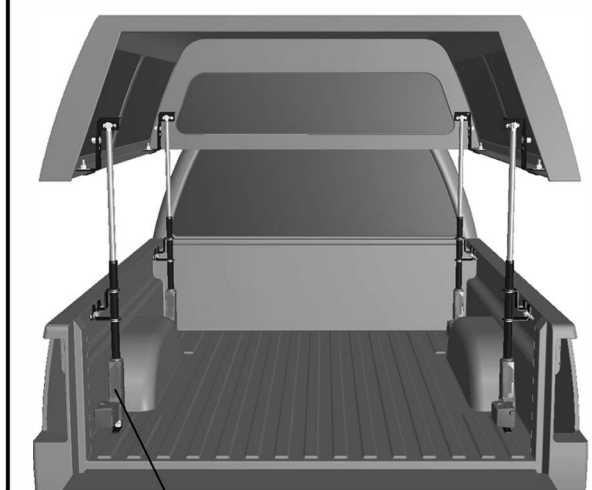
16

Last Step

- DOUBLE CHECK ALIGNMENT, make sure the topper is not rubbing on the truck. **DOUBLE CHECK HARDWARE**, make sure none of the hardware is rubbing against each other. ***If needed loosen bolts and realign topper and brackets***

- DOUBLE CHECK that all nuts and bolts are tight.

- If topper goes out of alignment, raise or lower the topper completley to reset the actuators.



Control Box Goes Here on standard installs

THANK YOU AND ENJOY YOUR

TOPPER LIFT